



Chiswick Lane, London, W4 2JQ

£335,000

**WHITMAN & CO.**

SALES · LETTINGS · COMMERCIAL

- Double bedroom
- 16' reception room
- High ceilings

- Luxury bathroom
- Fully fitted kitchen
- No onward chain

Tenure - Leasehold with share of freehold  
 Lease length - 999 years remaining  
 Ground rent - peppercorn  
 Service charge - £1000 pa  
 Local authority - Hounslow  
 Council tax - Band D

## THE PROPERTY

A well-presented one-bedroom period conversion flat, ideally located in this central Chiswick location, offering close proximity to numerous amenities.

The property includes a double bedroom, a luxury bathroom, a 16' reception room, and a fully fitted kitchen, all with high ceilings.

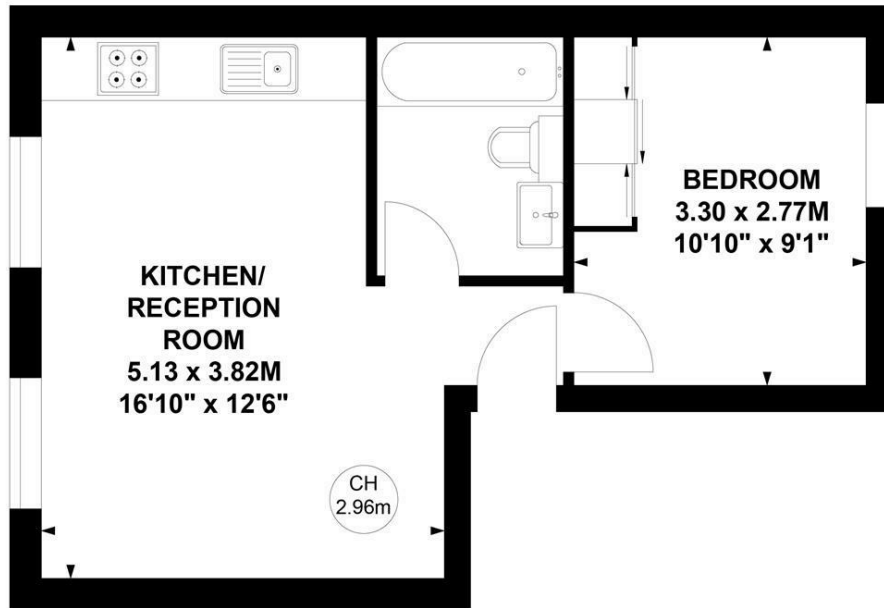
Ideally located for access to Turnham Green (Tube) Station and the extensive range of shops, bars and restaurants on Chiswick High Road. No onward chain.

## Chiswick Lane, W4

Approximate Gross Internal Area  
**32.79 sq m / 353 sq ft**



Key :  
 CH - Ceiling Height



### First Floor

Not to scale, for guidance only and must not be relied upon as a statement of fact.  
 All measurements and areas are approximate only

## SITUATION



5-7 Turnham Green Terrace, Chiswick, London, W4 1RG

Tel 020 8747 8800

E-mail [sales@whitmanandco.com](mailto:sales@whitmanandco.com)

Website [www.whitmanandco.com](http://www.whitmanandco.com)

